

carel[®]
woodworks



c a t a l o g



www.carel.ro || office@carel.ro || sales@carel.ro
*Exclusively for Romania || www.carelshop.ro
Drumul Careiului nr. 45,
Parc Industrial Renovatio, Vetiș, 447355,
Satu Mare, România
+40 740 150 894 / +40 261 847 720

We are proud to present the latest catalog from Carel Woodworks, an award-winning furniture brand and manufacturer.

Our passion is creating heirloom pieces that will bring style and functionality to your home, office, and hospitality spaces.

At Carel, we believe that furniture should not only look great but also be made to last. That's why we use only the finest materials and state-of-the-art techniques in our factory, located near the stunning Carpathians mountains of Transylvania.

Our solid wood furniture is made with care and precision, ensuring that each piece is of the highest quality.

Carel Woodworks is a woman-owned family business, and we are proud to be a part of this thriving community.

Our commitment to excellence, combined with our passion for design, has made us one of the most sought-after furniture brands in the industry.

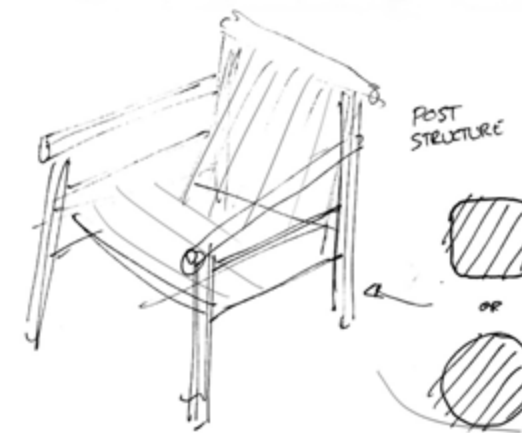
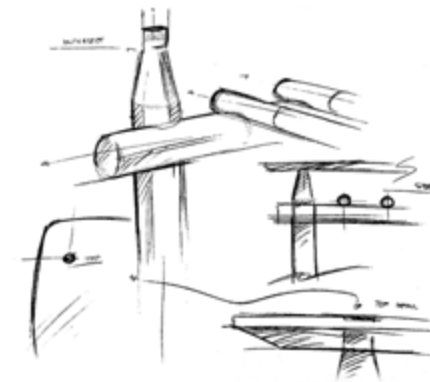
carel®
woodworks

Steekla

by Hill Studio x Carel Woodworks

Hill Studio is a Baltimore-based design studio founded by Jesse Hill in 2019. Fueled by a passion for all furniture and lighting archetypes, Hill aims to develop products that bring beauty, joy, function, and betterment to the everyday. Hill explores how the dots are connected when designing a project from a lens of his own perspectives

“ I am interested in the parameters of materials, manufacturing, and user needs, filtering down to the most streamlined function. My process is about refining the form to its cleanest and inviting expression, constructed within constraints. I always strive for simplicity, approachability, function, context, and intention.”



The range began with a conversation and review of traditional Romanian woodwork and craft, and how to be best showcase but modernize this theme. Ideally we wanted to create products that could flex between a living and working environment, while featuring the craftsmanship and tradition.

I developed some of my design cues from Japanese and minimalist influences. I found the intersections of culture, craftsmanship and flexibility to be critical and inspiring. The end goal was to generate modern, yet subtle and rational products. The post and dowel construction was a direct relational nod to the material, forest and timber.

I found myself curious about the intersections of the same components, such as dowels, and how to build using these common, easily manufactured part. The dowels and circles are a translation of the common spaces and uses of these products, something we can all relate to and approach.

Products in this collection:

- Steekla Table
- Steekla Chair
- Steekla Lounge Chair
- Steekla Storage Unit
- Steekla Shelving
- Steekla Credenza

Steekla Table

by Hill Studio x Carel Woodworks



SKU: STE-TA-01

Product Dimensions: 2200 x 1000 x 750mm
2800 x 1000 x 750mm

AVAILABLE WOOD FINISHES



Oak

Walnut

Black

Creamy



The table range allows for comfortable dining and conversation, with an offering of 6 and 8 seating sizes.



The dining table was inspired by the material and the forest, considering how limbs and branches interconnect and weave through one another.

The slight limbs allow for a bag or a scarf to be hung while in use, and the angled edge invites you to sit in a bit closer.



Steekla Chair

by Hill Studio x Carel Woodworks



SKU: STE-CH-01

Product Dimensions: 600 x 610 X 810mm

Seat height: 450mm

AVAILABLE WOOD FINISHES



Oak

Walnut

Black

Creamy



The dining/ side chair gives the user comfort and airiness, while allowing you to experience the materiality of the product.



The upholstery comes in a variety of colors and textures and the wood has some finish option as well.



Steekla Lounge Chair

by Hill Studio x Carel Woodworks



SKU: STE-LC-02

Product Dimensions: 870 x 800 X 810 mm

Seat height: 375mm

AVAILABLE WOOD FINISHES



Oak



Walnut



Black



Creamy

The lounge chair was about encompassing the user in soft textiles within a boundary of soft wood armrests and legs.



The upholstery comes in a variety of colors and textures and the wood has some finish option as well.



Steekla Storage Unit

by Hill Studio x Carel Woodworks



SKU: STE-SU-03

Product Dimensions: 1520 x 430 x 1830mm

AVAILABLE WOOD FINISHES



Oak

Walnut

Black

Creamy

The storage unit is designed to cater to a wide range of storage needs and provides you with a variety of options to choose from.

This sideboard with open shelving at a standing height not only offers functionality but also brings a touch of nature into your home.



The main support system of the storage group leverages taller dowel posts, which are similar to the branches of a tree, referencing the forest.



Steekla Storage Unit with marble

by Hill Studio x Carel Woodworks



SKU: STE-SM-04
Product Dimensions: 1520 x 430 x 1830mm

AVAILABLE WOOD FINISHES



Oak Walnut Black Creamy

AVAILABLE MARBLE FINISHES



Black White Light brown

The marble top adds a sophisticated touch to the unit and makes it the perfect addition to any contemporary or traditional interior.



For those who prefer a touch of luxury, we are pleased to offer a marble option for the storage unit.



Steekla Shelving

by Hill Studio x Carel Woodworks



SKU: STE-SH-05

Product Dimensions: 1520 x 390 x 1830mm

AVAILABLE WOOD FINISHES



Oak

Walnut

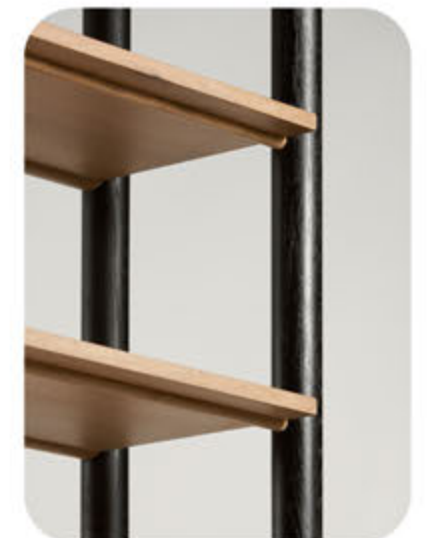
Black

Creamy

The standing height open shelving unit allows you to choose the perfect storage solution for your home or office based on your specific requirements.



This unique design not only adds a touch of elegance to the furniture, but also ensures that it is sturdy and durable.



Steekla Credenza

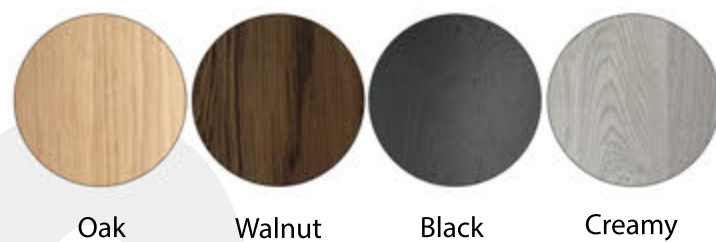
by Hill Studio x Carel Woodworks



SKU: STE-CR-01

Product Dimensions: 1520 x 430 x 745mm

AVAILABLE WOOD FINISHES



Oak

Walnut

Black

Creamy

At Carel, we are committed to providing our customers with high-quality furniture that combines style and functionality.



Similar to the rest of the range, the credenza leverages taller dowel posts as the main support system, referencing the forest and tree branches.



Steekla Credenza with Marble

by Hill Studio x Carel Woodworks



SKU: STE-CM-02
Product Dimensions: 1520 x 430 x 745mm

AVAILABLE WOOD FINISHES



Oak Walnut Black Creamy

AVAILABLE MARBLE FINISHES



Black White Light brown

We believe that the credenza with its marble option is the perfect addition to any home or office. It also enhances the aesthetics of your space.



The unique design not only adds a touch of elegance to the furniture, but it also ensures that it is sturdy and durable.



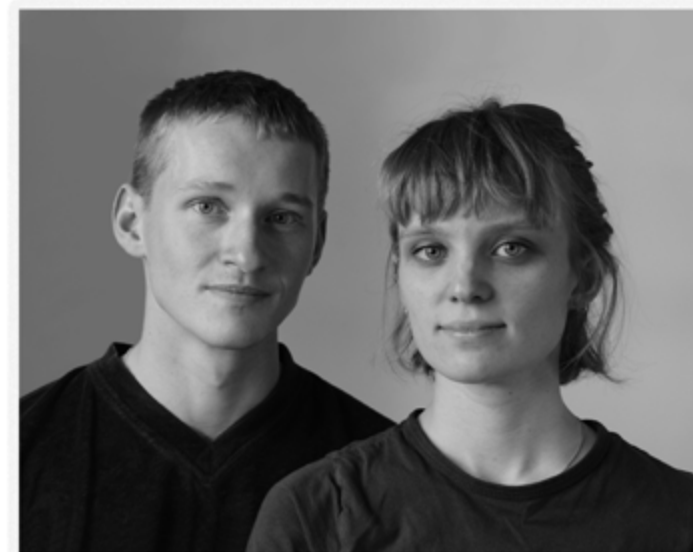
PHAT

by Studio PHAT x Carel Woodworks

PHAT is an award winning British design studio based in Newcastle-Upon-Tyne, representing the collaborative work and professional partnership of Claudia Surrage and Christian Cowper.

Bold and honest. Christian and Claudia's approach to design celebrates materials for what they are; expressing their beauty through form and proportion.

Graduation of Three-Dimensional Design, alongside the study of ceramics built a strong foundation of knowledge on top of an intuitive creative grounding for the duo. A natural intrigue and sensitivity for form, proportion and material choice, combined with a sense of human and emotional connection, have allowed Claudia and Christian to create beautiful works often with a distilled simplicity.



ANGUS + PASCO

Our partnership with Carel has been an insightful look into a culture we had not previously explored.

Romania's rich decorative heritage melded with a brutalist intensity seen in architecture across the country, guided us in our attempt to harmonise harsh forms with subtle details, soft appearances with bold structures.

Products in this collection:

- Angus Table
- Pasco Chair



Angus Table

by Studio PHAT x Carel Woodworks



SKU: PHA-AT-01

Product Dimensions: 2200 x 1000 x 750mm
2600 x 1000 x 750mm

AVAILABLE WOOD FINISHES



Oak



Walnut



Black



Creamy

With the Angus table we wanted a sharp aesthetic that showcased traditional joinery methods.



Finger joints create a pattern of contrasting wood-grain along the full height of each leg, with the acutely angled slabs allowing space for shadow to become an additional detail.



Pasco Chair

by Studio PHAT x Carel Woodworks



SKU: PHA-PC-01

Product Dimensions: 460 x 570 x 790mm

Seat height: 470mm

AVAILABLE WOOD FINISHES



Oak

Walnut

Black

Creamy



The seat and backrest of the chair are cradled by the frame, giving a sense of comfort to the Pasco design.

Our thought behind the Pasco chair was to utilise generous proportions and a feeling of openness and understanding toward its construction.



Angus Coffee Table

by Studio PHAT x Carel Woodworks



SKU: PHA-AC-01

Product Dimensions: dia 700 x 350mmH

SKU: PHA-AC-02

Product Dimensions: dia 900 x 350mmH

AVAILABLE WOOD FINISHES



The Angus coffee table is a perfect complement to the large Angus dining table, both in terms of design and functionality. Made from the same high-quality materials and featuring a similar style, the Angus coffee table is a smaller and more versatile version of the Angus dining table.

The Angus coffee table shares the same sturdy and robust construction as the dining table, with a solid oak frame and a beautifully crafted top. The table's surface is made from thick and durable oak.

The use of Finger joints not only creates a beautiful design element but also adds strength and stability to the legs of the round coffee table.



Cannoli Sofa

by Studio PHAT x Carel Woodworks



SKU: PHA-CS-01

Product Dimensions: 2180 x 960 x 720mmH

AVAILABLE WOOD FINISHES



It combines modern aesthetics with traditional craftsmanship, making it a unique and stylish addition to any home, coworking space, hotel or any type of lounge area.

The Cannoli sofa is a stunning centerpiece for any lounge area. Its design is defined by the exposed wooden frame, which wraps around the cushioned elements of the sofa.

The oak frame is bent and shaped to create a seamless and dynamic appearance, while providing sturdy support for the cushions. The sofa's seat and backrest are upholstered in a soft and comfortable fabric, creating a cozy space to relax and unwind.



Cannoli Lounge Chair

by Studio PHAT x Carel Woodworks



SKU: PHA-CL-02

Product Dimensions: 1180 x 960 x 720mmH

AVAILABLE WOOD FINISHES



Oak

Walnut

Black

Creamy

Red

Green

Blue

The chair's backrest is angled perfectly for ergonomic support, while the armrests provide a comfortable place to rest your arms making the Cannoli lounge chair a perfect spot to curl up with a good book or enjoy a relaxing afternoon nap.



Its unique design and luxurious comfort make it a statement piece in any room.



Cannoli Ottoman

by Studio PHAT x Carel Woodworks



SKU: PHA-CO-03

Product Dimensions: 710 x 670 x 360mmH

AVAILABLE WOOD FINISHES



The Cannoli ottoman is a versatile and stylish addition to any living space. Its design is similar to that of the sofa and lounge chair, with a bent oak frame that encases the cushioned top.

The Cannoli ottoman's unique design and functionality make it a great complement to the other pieces in the range, or as a standalone accent piece in any room.

The ottoman's compact size makes it perfect for use as a footrest or as an extra seat when entertaining guests. Its cushioned top is upholstered in a soft and durable fabric, making it a comfortable place to rest your feet after a long day.



heron

by Lukas Heintschel x Carel Woodworks

Lukas Heintschel (*1995) is an award-winning designer currently based in Munich, Germany.

Shortly after finishing his studies in Industrial- & Product-Design at Munich University of Applied Sciences he founded his own design studio Lukas Heintschel Design. His works have been awarded multiple times and exhibited at various international design events such as the Milan Design Week or the Ambiente Talents Exhibition.

He also co-founded the lighting brand Neozoon and is a jury member of the LUXI Design Award.

His designs aim to give people a little smile in their day to day life. They follow the cradle-to-cradle approach and combine playful details and usability concepts with calm, iconic shapes.



The heron-collection combines timeless elegance with a calm, iconic shape.

All pieces of the collection are made of solid oak. This heavy-seeming material is contrasted by a flowing, almost organic design language that underlines the naturalness of the material and gives the pieces a light, sublime appearance.



The combination of timeless design, sustainable forestry and high-end craftsmanship results in a collection of contemporary heirlooms with a sublime, minimalistic elegance.



The collection is named after the bird „heron“ as it embodies the sublime, light elegance, flowing shape and strong connection to nature that makes this furniture collection so special.

Products in this collection:

- heron Table
- heron Chair
- heron Credenza



heron Table

by Lukas Heintschel x Carel Woodworks



SKU: HER-TA-01

Product Dimensions: Ø 1300 x 750mm

AVAILABLE WOOD FINISHES



Oak

Walnut

Black

Creamy

Red

Green

Blue

The heron-table is both perfect for a private home as well as for professional spaces.

Its carved, solid oak tabletop gives it a light, sublime appearance and the contour of the legs resembles the flowing lines of the heron-chair's backrest or the legs of the heron-sideboard.

Its overall, minimal appearance gets a special twist by the contrast of its round tabletop and its legs, which have an angular but also flowing appearance.

The heron-table is a piece of furniture that fits every kind of space while also adding something special.



heron Chair

by Lukas Heintschel x Carel Woodworks



SKU: HER-CH-01

Product Dimensions: 450x580x920mm

Seat height: 450mm

AVAILABLE WOOD FINISHES



Oak



Black



Creamy



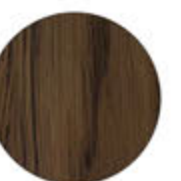
Red



Green



Blue



Walnut

As the centerpiece of the collection, the heron-chair combines a classic, timeless aesthetic with a contemporary minimalism.



Its flowing curves give this solid oak chair a light and sublime appearance its also available in a cushioned version, upholstered with up-cycled fabrics.

Besides the natural oak finish, all pieces are also available in open-pore, acrylic lacquer finishes.

heron Credenza

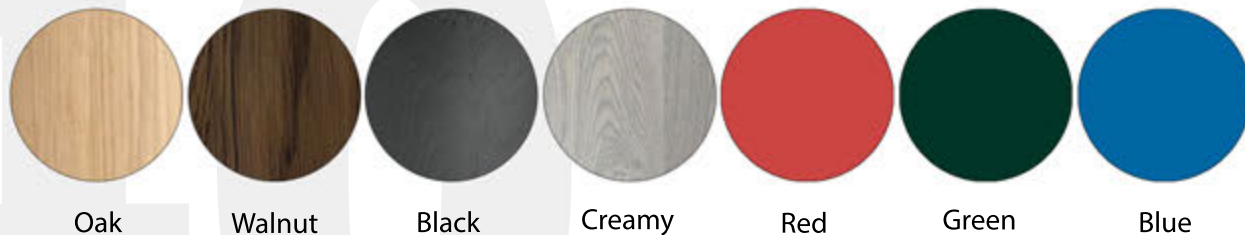
by Lukas Heintschel x Carel Woodworks



SKU: HER-CR-01

Product Dimensions: 1000x400x700mmH

AVAILABLE WOOD FINISHES



Oak

Walnut

Black

Creamy

Red

Green

Blue



Its concavely carved top side seems to flow into the wall behind it and gives it an iconic, easily recognizable appearance.

The wood is cut in a responsible manner and like the other pieces of furniture in this collection, this one is available in natural oak as well as in different open-pore acrylic lacquer finishes.

441

This solid oak sideboard is part of the heron-collection and focuses on elegant minimalism combined with a distinct, calm presence.

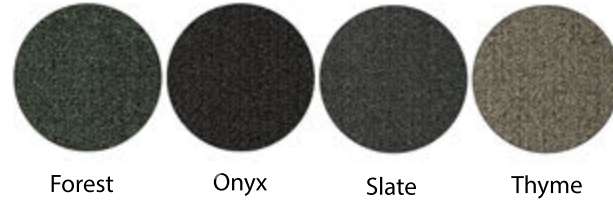
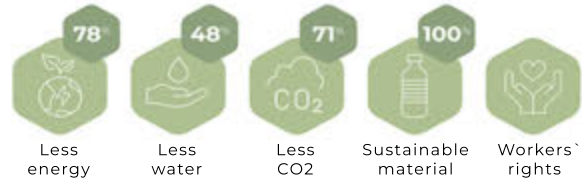


AVAILABLE FABRICS FROM FABRAA

FABRICS INFORMATION
 Composition: 100% RPET
 Provider: Fabraa
 Collection: Member



Blush Cognac Carmine Denim Desert



Forest Onyx Slate Thyme

AVAILABLE FABRICS FROM TEXTAAFOAM

FABRICS INFORMATION
 Composition: 90% PES 5% CO 5% PAC
 Provider: Textaafoam
 Collection: Alpine



AVAILABLE WOOD FINISHES



Oak Walnut Black Creamy Red Green Blue

AVAILABLE MARBLE FINISHES



Black White Light brown

Carel Woodworks is committed to creating sustainable and timeless furniture pieces. We use only the finest materials, including solid oak and marble, to ensure that each piece not only looks beautiful but also stands the test of time.

By using sustainable materials, we are doing our part in preserving the environment for future generations. Invest in quality and sustainability with Carel Woodworks.

We hope that this catalog will give you a glimpse into our world, showcasing the beauty and quality of our furniture. Whether you are looking for a statement piece for your home, a functional piece for your office, or a welcoming touch for your hospitality space, we have something for you.

Thank you for considering Carel Woodworks for your next furniture purchase. We are confident that you will love our furniture as much as we do.



<https://www.facebook.com/carelfurniture>



<https://www.instagram.com/carelwoodworks>



<https://www.linkedin.com/company/carel-woodworks>



<https://pinterest.com/carelwoodworks>

carel[®]
woodworks

